

SURVEYOR'S OFFICE

Hamilton County

Kenton C. Ward, Surveyor

776-9626

942 Maple Avenue

Noblesville, Indiana 46060

October 05, 1990

To: Hamilton County Drainage Board

Re: J.M. Thompson Drain

Attached are the plans for the proposed drain extension of the J.M. Thompson Drain west of U.S. 31. The proposed extension will replace existing 10" and 12" clay field tiles from Sta. 6+70 to Sta. 18+60 on the drain.

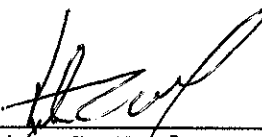
The cost estimate for the drain extension is as follows:

24" RCP	470'	@ 43.75 lin. ft.	\$20,562.50
30" RCP	730'	@ 51.75 lin. ft.	37,777.50
60" Manhole (Str. 19,20,21)	3	@ 1,500.00 each	4,500.00

The estimated cost for the extension is \$62,840.00.

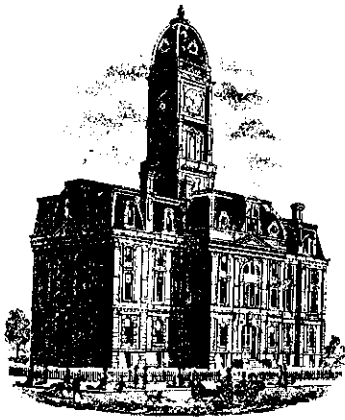
The proposed extension will not increase the reconstruction assessment for the drain as there is enough monies in the fund to complete the work. The engineer's estimate for the drain project was \$709,017.00. The amount submitted by the contractor to date for payment is \$595,032.72 leaving a balance of \$113,984.28 in the reconstruction fund.

A hearing has been set for October 15, 1990.



Kenton C. Ward,
Hamilton County Surveyor

KCW/jh



SURVEYOR'S OFFICE
Hamilton County

Kenton C. Ward, Surveyor

776-9626

942 Maple Avenue

Noblesville, Indiana 46060

April 16, 1992

To: Hamilton County Drainage Board

Re: J.M. Thompson Drain

In April of 1991 a final inspection of the reconstruction of the J.M. Thompson Drain was made. At that time work was found to be complete and acceptable. This work was completed by General Metro Corporation. The Engineer for the project was Douglas E. Miller, P.E. of Miller Consulting.

The reconstruction report for this project is dated November 20, 1989. The hearing for the project was on December 18, 1989. The bid opening was held on March 19, 1990. The original project bid was for \$499,246.00. However, due to several modifications and additions, the total project construction cost is \$665,625.28; total engineering cost is \$26,556.75 for a total project cost of \$692,182.03. The total cost estimate per my report dated November 20, 1989 was \$709,017.00. Although the certified assessment to the Auditor dated October 15, 1990 was for \$704,098.04, on April 22, 1991, the Drainage Board reduced the assessment roll by removing nine parcels at a total of \$8,232.00 leaving the total assessment at \$695,866.04. At this time 12 additional tracts have been removed per letter dated 04-15-92. These tracts were inadvertently left off of my 11-20-89 report. The total to be removed per the 04-15-92 report is \$13,680.00 for a total assessment of \$682,186.00. Although the total assessment as certified will fall below the total project cost, the certified assessment does not reflect \$22,289.50 of cost billed back to Chrisman, GTE & Marathon. This is detailed elsewhere in this report. The total assessment with these added is \$704,475.54 which is more than the total cost of the project.

During the course of the project a total of five change orders were submitted to the contractor. Change Order #1, dated June 12, 1990, covered the extension of storm drains in the Newby Addition to the open ditch. The change order also revised the location of the Hoover Street crossing. The sixth paragraph, third line shows the amount of the street repair at \$1,280.00. The correct figure is \$1,299.20. The total increase for #1 change order is \$8,483.20.

Change Order #2 ran the new storm line from Str. 17, located along the west right-of-way of Union Street, under U.S. 31 to Str. 18, located along the west right-of-way of U.S. 31. Also, because of a request from the Town of Westfield, a 36" RCP was placed along the south side of Hoover Street. The total for this change order was \$84,000.00.

Due to the construction of the GTE/Sylvania Building a 12" RCP with Structure was installed as Change Order #3. This 64' length of pipe was installed along Union Street, north out of Str. 17. GTE/Sylvania is to pay \$1,052.00 of the \$2,595.50 total cost per Drainage Board Minutes of November 19, 1990.

The work for Change Order #4, dated November 5, 1990 was an extension of the drain west of U.S. 31. A hearing for this extension, per a report dated October 5, 1990, was held on October 15, 1990. The cost for this work was \$60,808.75. The State Highway Department has approved and released this work as complete.

Change Order #5, dated April 18, 1991, was per installation of a fence in the park, as ordered by the Drainage Board. The total for this work was \$5,375.00.

Additional extra work as specified in the contract in regard to tile outlets amounted to \$5,116.83.

Billings for work done on this project for three individual situations have been sent. These three items have not been included in the total assessments as discussed above. Included is the work as noted above for Change Order #3 to GTE/Sylvania for \$1,052.00. Also, per the Drainage Board action on June 25, 1990, it was ordered that Leo F. Chrisman & Max Bender pay one third (1/3) of the cost for extending a sump pump outlet in a 4" plastic tile for 165 feet. (See violation letter dated June 12, 1990.) The \$1,312.50 cost was to be shared equally by the drainage shed, contractor and owner for a total cost to the owner of \$437.50.

The special structure for installing the storm sewer under the Marathon Pipeline was to be paid by the pipeline. These were used in lieu of lowering the pipeline. The cost for this work amounted to \$20,800.00.

The new drain now intercepts the original 1899 drain at or near its Sta. 6+70, which is the same as Str. 20 shown on Sheet 5A of the as-builts and runs back into the original drain at Sta. 60+90 which is Sta. 3+50 on Sheet 2 of the as-builts. The tile drain as described in the 1899 report between Sta. 6+70 and Sta. 60+90 is vacated as part of this work. The original drain from Sta. 0 to Sta. 6+70 and from Sta. 60+90 to Sta. 90+00 will remain regulated drain. This amounts to 3580 feet of the original drain.

The new drain consists of the following lengths:

Main Drain


Str. 19 to 20	470' of 24" RCP
Str. 18 to 19	730' of 30" RCP
Str. 17 to 18	202' of 36" Steel Casing
Str. 17 to 18	190' of 36" RCP
Str. 14 to 17	1030' of 42" RCP
Str. 12 to 14	635' of 48" RCP
Str. 11 to 12	100' of Twin 36" RCP
Str. 10 to 11	350' of 68" x 43" RCPA
Str. 4 to 10	1410' of 54" RCP
Outlet to Str. 4	20' of 72" RCP
Sta. 3+50 to Sta. 0	350' of Open Ditch

Total 5487 feet

Arm #1		
Str. 1 to Str. 4		765' of 36" RCP
Arm #2		
Str. 13 to Str. 13A		68' of 12" RCP
Arm #3 (GTE/Sylvania)		
Str. 17 to Str. 17A		64' of 12" RCP
Main Drain Overflow		
Str. 6 to existing pipe		280' of Open Ditch
under Hoover Road		
Existing pipe under Hoover Rd.		36' of 5.65' x 3.35' CMP
New pipe south side of Hoover Rd.		100' of 36" RCP

The total length of new drain is 6800'.

The contractor has submitted a statement that all material costs and wages have been paid. I recommend the Board accept the drain as complete.



Kenton C. Ward,
Hamilton County Surveyor

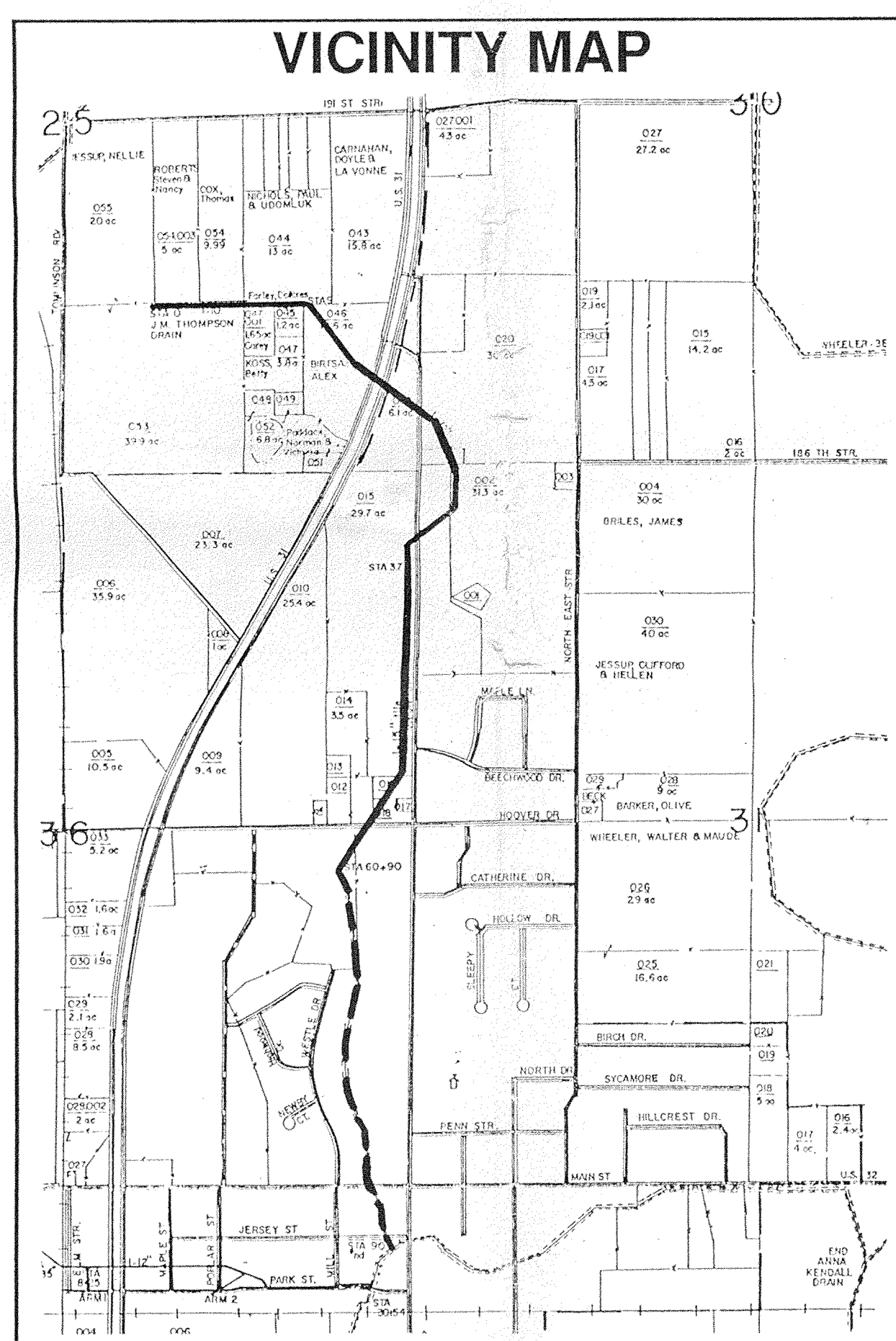
KCW/jh

WESTFIELD, INDIANA

"OFFICE COPY"

J. M. THOMPSON LEGAL DRAIN

"Drainage Study"



Prepared for:
Hamilton County Drainage Board
- Peg Goldberg
- Steven Dillinger
- Steven Holt

Prepared by:
Douglas E. Miller Consulting Engineering
Vantage Point Office Tower, Suite 470
4475 Allisonville Road
Indianapolis, Indiana 46205

INDEX

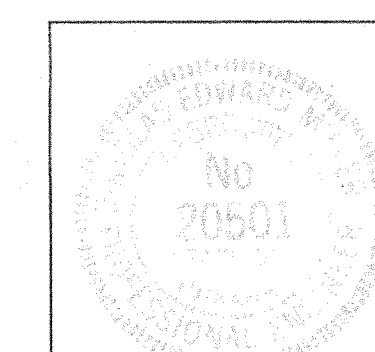
Page No.	Description
1	Cover
2,3,4,5	Plan & Profile
6,7	Stream Cross-Sections
8	Bridge & Culvert Dimensions
9	Details and Specifications

Jerry,

These are the final design drawings, but do not include as-built info. Call Me

DEMPSE

Douglas E. Miller
DOUGLAS E. MILLER P.E. 10 Jan, 1990



FILED

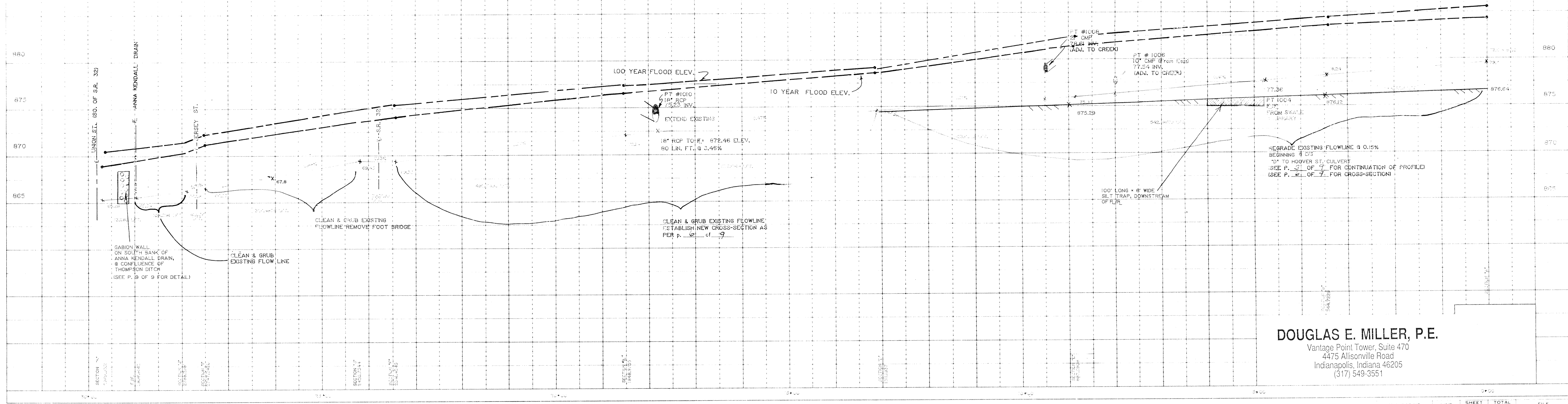
FEB 08 1991

OFFICE OF HAMILTON COUNTY SURVEYOR

DATE: _____
 BY: _____
 PLAN: SURVEYED, CHECKED, NOTED, AUTOMATIC CHECKED, BY: _____
 NOTE BOOK: _____
 No. _____



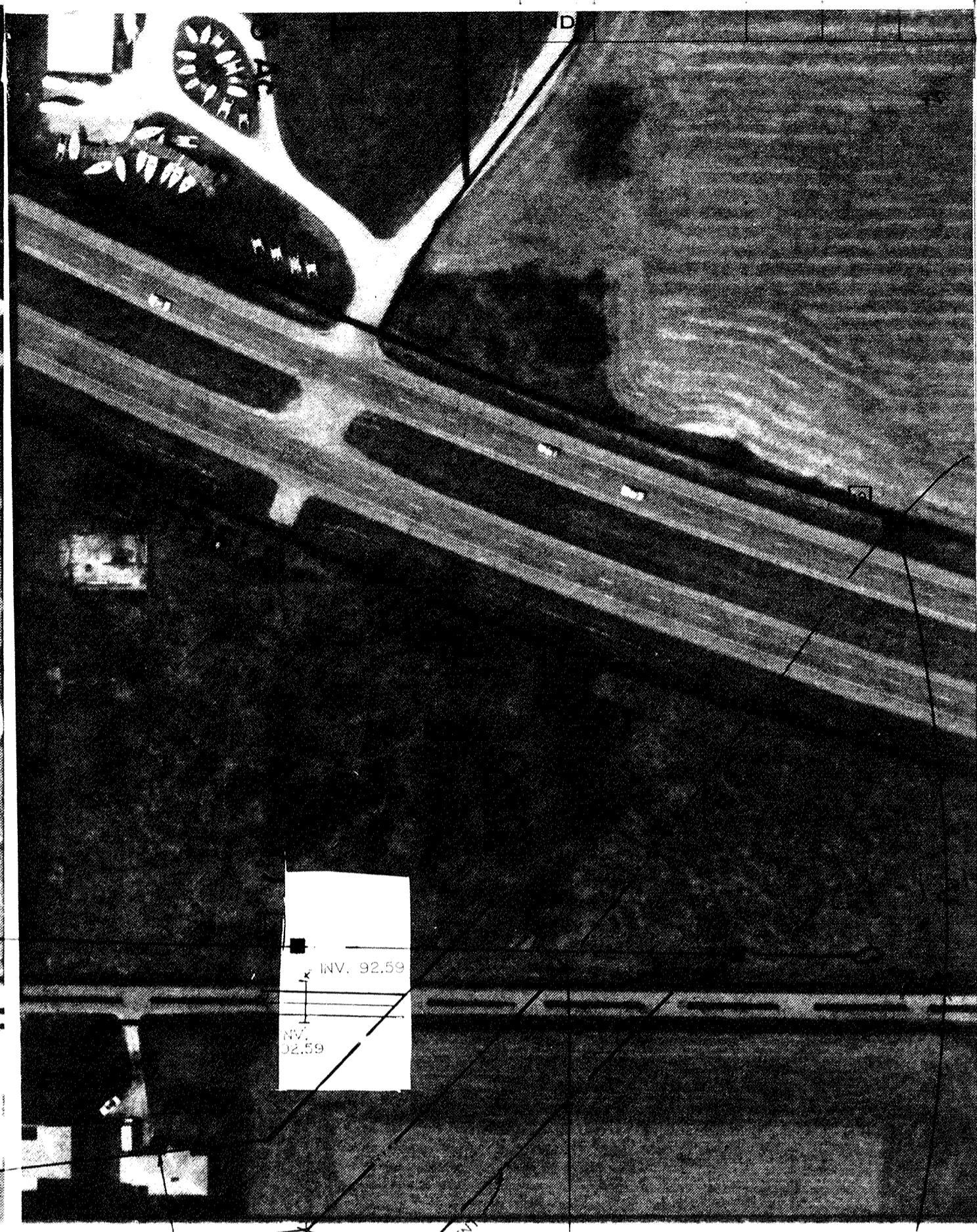
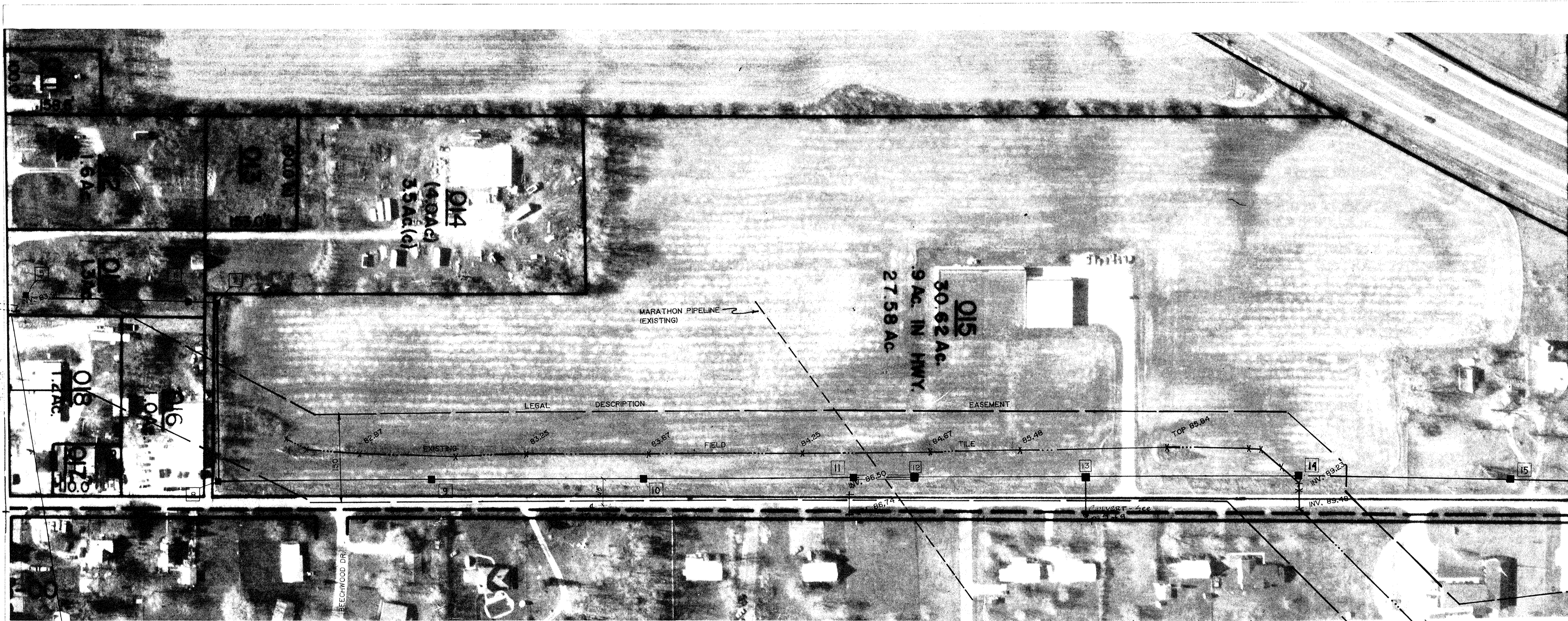
DATE: _____
 BY: _____
 PROFILE: SURVEYED, CHECKED, NOTED, AUTOMATIC CHECKED, BY: _____
 NOTE BOOK: _____
 No. _____



DOUGLAS E. MILLER, P.E.
 Vantage Point Tower, Suite 470
 4475 Allisonville Road
 Indianapolis, Indiana 46205
 (317) 549-3551


PROJECT NO.	LINE	SHEET NO.	TOTAL SHEETS	FILE
		2	9	

PLAN SURVEYED BY DATE
 NOTED BY
 NOTE BOOK NO. DATE CHECKED
 PL. OR WAY CHECKED



EXISTING 15" RCP, L = 32' INV. 886.50 W INV. 886.74 E

INTERSECT THE WILSON ROAD AT THE SOUTH END OF THE PROPERTY (ADJ. TO 1110)

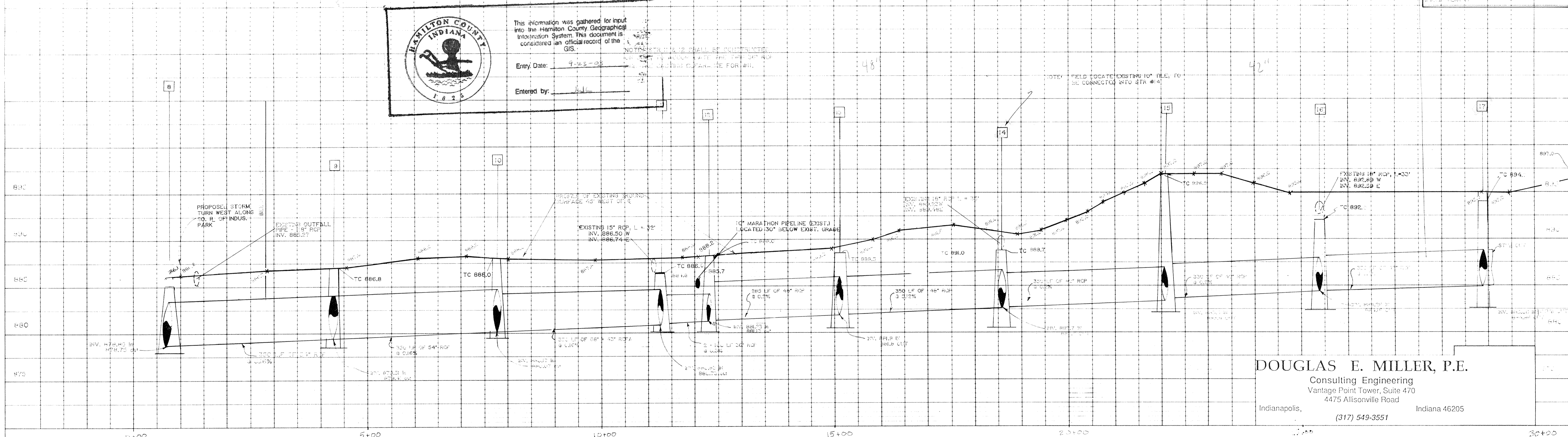


This information was gathered for input into the Hamilton County Geographical Information System. This document is considered an official record of the GIS.

Entry Date: 9-23-05

Entered by: [Signature]

PROFILE SURVEYED BY DATE
 NOTED BY
 NOTE BOOK NO. DATE CHECKED
 B. & V. NOTED
 STRUCTURE NOTATIONS CHECKED



DOUGLAS E. MILLER, P.E.
 Consulting Engineering
 Vantage Point Tower, Suite 470
 4475 Allisonville Road
 Indianapolis, Indiana 46205
 (317) 549-3551

PROJECT NO.	LINE	SHEET NO.	TOTAL SHEETS	FILE
		4	9	

STATE	PROJECT NO.	FISCAL YEAR	SHEET NO.	TOTAL SHEETS
IND.				

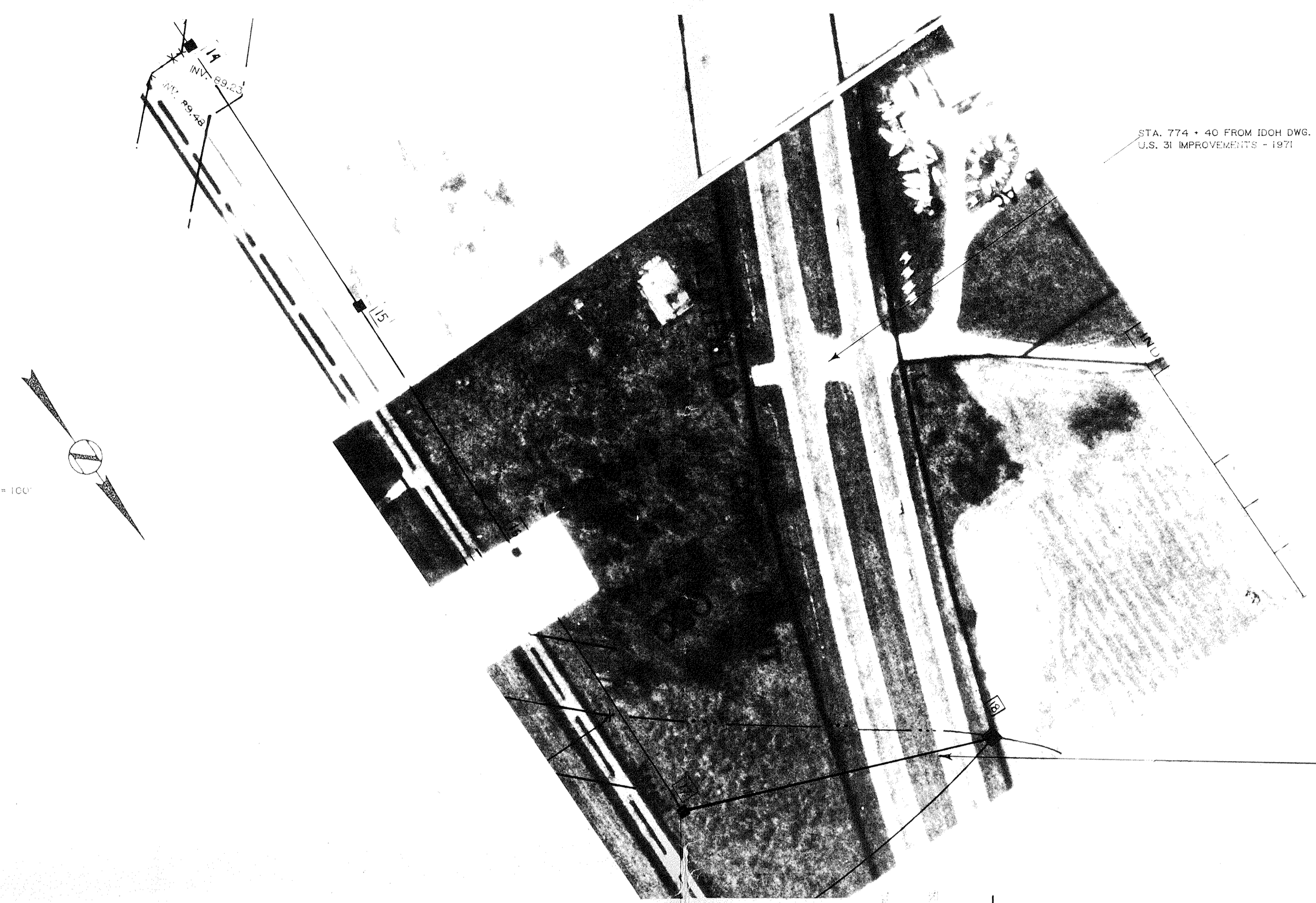
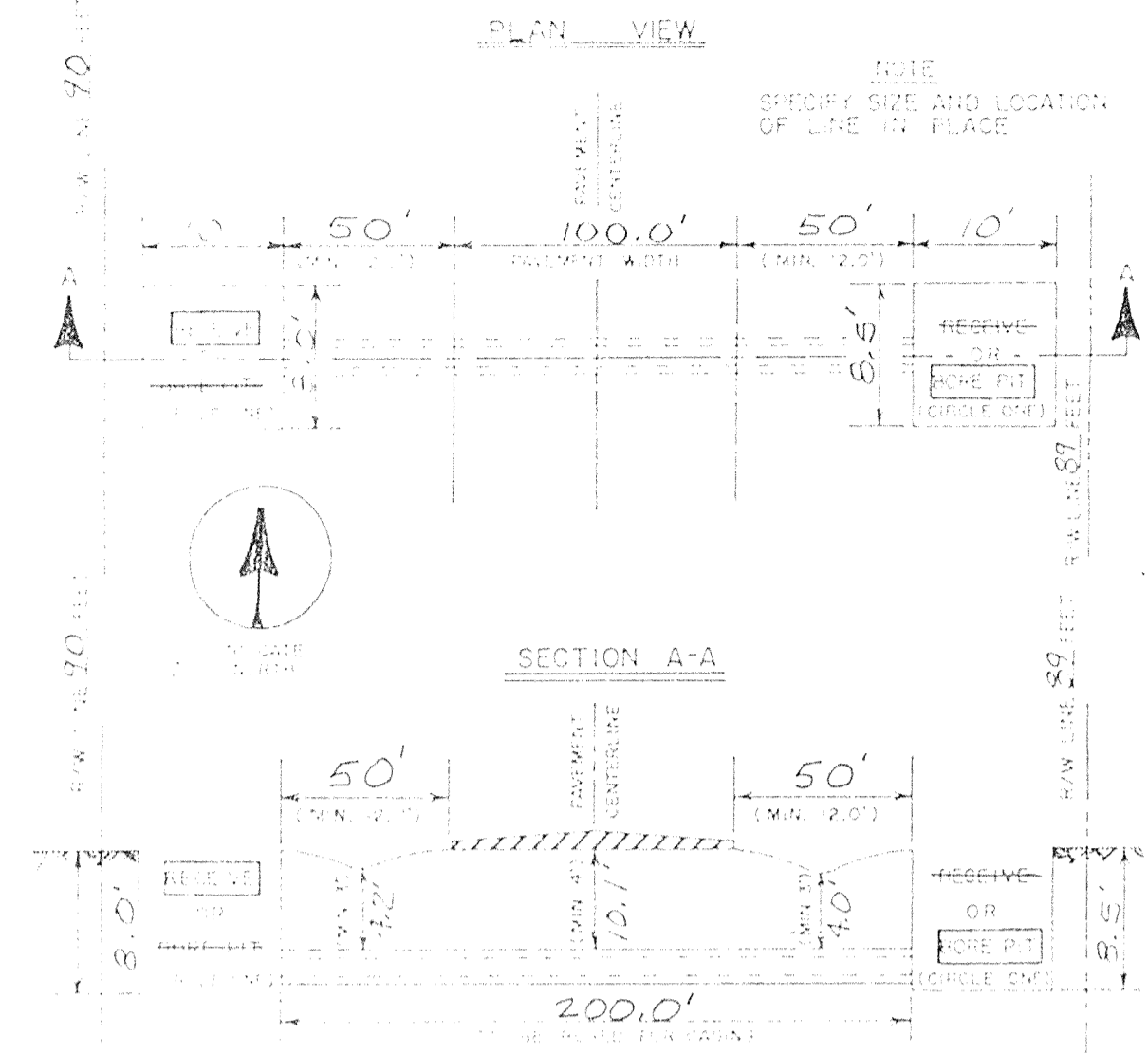
HAMILTON COUNTY
INDIANA
1825

This information was gathered for input into the Hamilton County Geographical Information System. This document is considered an official record of the GIS.

Entry Date: 9-23-03

Entered by: JML

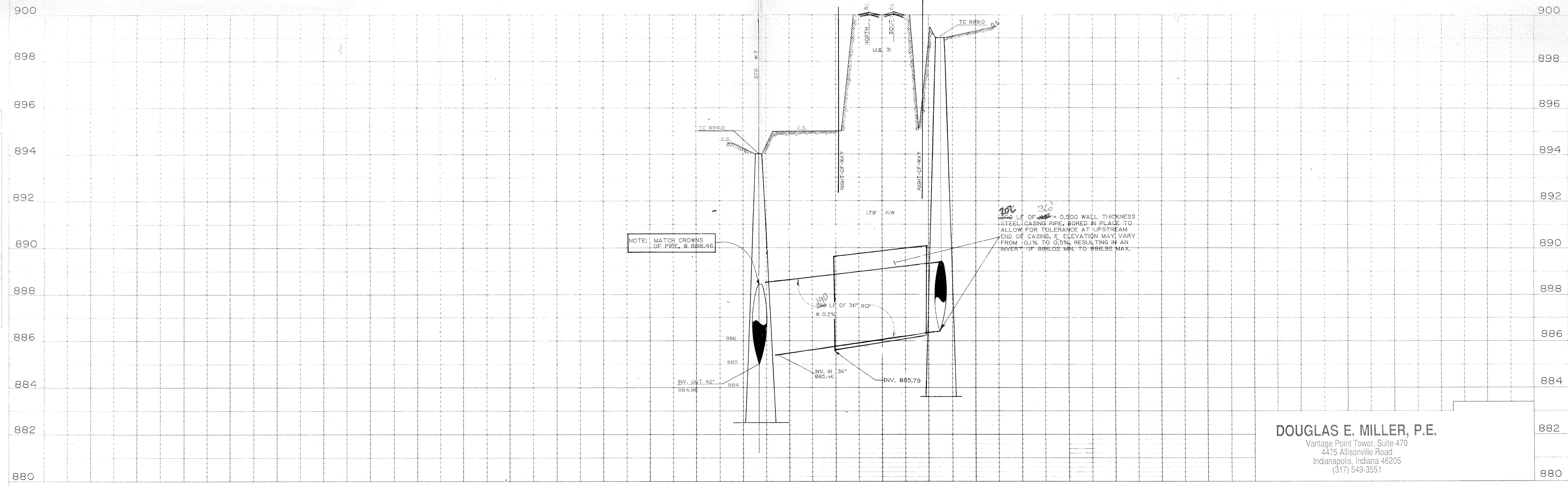
HIGHWAY BORING DETAIL



NOTE: CONTRACTOR SHALL JACK & BORE THE 48" STEEL CASING FOR THE PROPOSED 36" RCP. NO OPEN EXCAVATION SHALL BE ALLOWED IN IDOH RIGHT-OF-WAY. JACK & BORE DISTANCE IS ±200 FT., BEGINNING AT A POINT 10' OUTSIDE OF THE EAST R/W LINE, TO A POINT 10' OUTSIDE & WEST OF THE U.S. 31 R/W.

PLAN SHEET
SURVEYER
NOTED
BY: JML

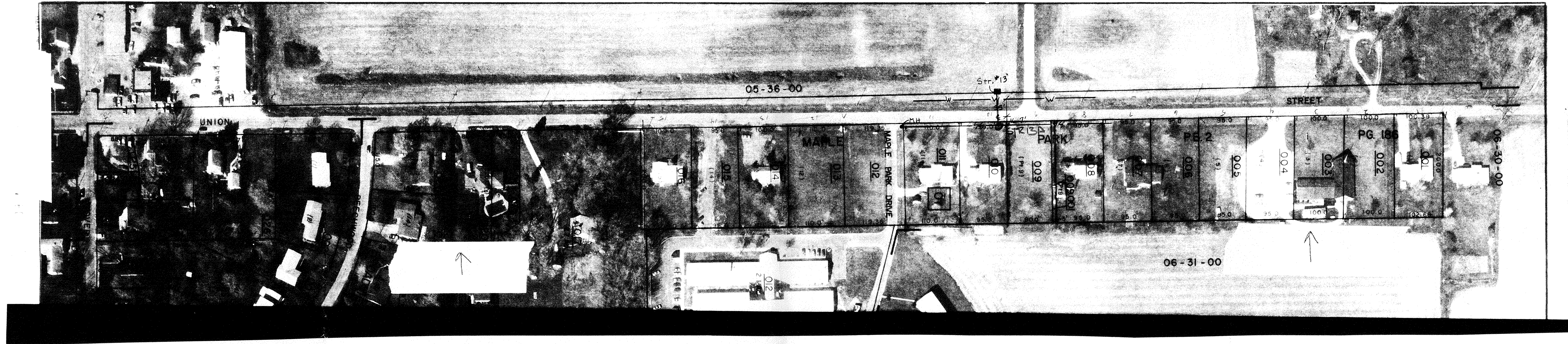
PROFILE SHEET
SURVEYER
NOTED
BY: JML



DOUGLAS E. MILLER, P.E.
Vantage Point Tower, Suite 470
4475 Allisonville Road
Indianapolis, Indiana 46205
(317) 549-3551

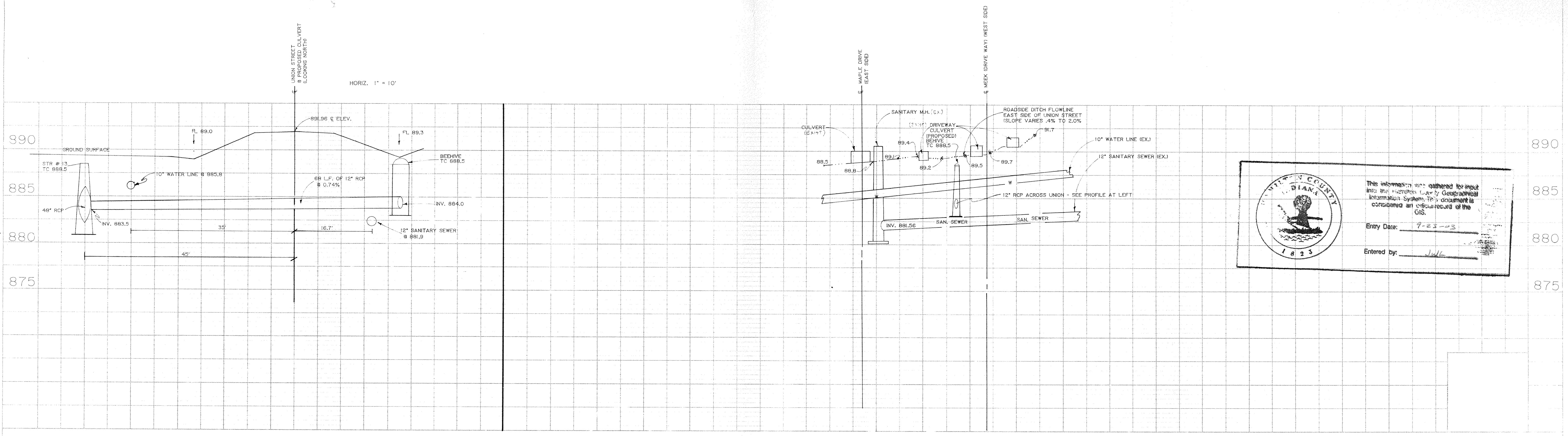
PROJECT NO.	LINE	SHEET NO.	TOTAL SHEETS	FILE
		4-A	9 (10)	Westfield


FEDERAL ROAD REGION NO.	STATE	PROJECT NO.	FISCAL YEAR	SHEET NO.	TOTAL SHEETS
	IND.				



PLAN SHEETS
 1. NOTED
 2. MODIFIED
 3. REVISIONS
 4. DELETED
 5. CANCELLED
 6. REWORKED
 7. REDESIGNED
 8. RECONSTRUCTED
 9. RELOCATED
 10. REPAIRED
 11. REPEATED
 12. REPEATED
 13. REPEATED
 14. REPEATED
 15. REPEATED
 16. REPEATED
 17. REPEATED
 18. REPEATED
 19. REPEATED
 20. REPEATED
 21. REPEATED
 22. REPEATED
 23. REPEATED
 24. REPEATED
 25. REPEATED
 26. REPEATED
 27. REPEATED
 28. REPEATED
 29. REPEATED
 30. REPEATED
 31. REPEATED
 32. REPEATED
 33. REPEATED
 34. REPEATED
 35. REPEATED
 36. REPEATED
 37. REPEATED
 38. REPEATED
 39. REPEATED
 40. REPEATED
 41. REPEATED
 42. REPEATED
 43. REPEATED
 44. REPEATED
 45. REPEATED
 46. REPEATED
 47. REPEATED
 48. REPEATED
 49. REPEATED
 50. REPEATED
 51. REPEATED
 52. REPEATED
 53. REPEATED
 54. REPEATED
 55. REPEATED
 56. REPEATED
 57. REPEATED
 58. REPEATED
 59. REPEATED
 60. REPEATED
 61. REPEATED
 62. REPEATED
 63. REPEATED
 64. REPEATED
 65. REPEATED
 66. REPEATED
 67. REPEATED
 68. REPEATED
 69. REPEATED
 70. REPEATED
 71. REPEATED
 72. REPEATED
 73. REPEATED
 74. REPEATED
 75. REPEATED
 76. REPEATED
 77. REPEATED
 78. REPEATED
 79. REPEATED
 80. REPEATED
 81. REPEATED
 82. REPEATED
 83. REPEATED
 84. REPEATED
 85. REPEATED
 86. REPEATED
 87. REPEATED
 88. REPEATED
 89. REPEATED
 90. REPEATED
 91. REPEATED
 92. REPEATED
 93. REPEATED
 94. REPEATED
 95. REPEATED
 96. REPEATED
 97. REPEATED
 98. REPEATED
 99. REPEATED
 100. REPEATED

PROFILE SHEETS
 1. NOTED
 2. MODIFIED
 3. REVISIONS
 4. DELETED
 5. CANCELLED
 6. REWORKED
 7. REDESIGNED
 8. RECONSTRUCTED
 9. RELOCATED
 10. REPAIRED
 11. REPEATED
 12. REPEATED
 13. REPEATED
 14. REPEATED
 15. REPEATED
 16. REPEATED
 17. REPEATED
 18. REPEATED
 19. REPEATED
 20. REPEATED
 21. REPEATED
 22. REPEATED
 23. REPEATED
 24. REPEATED
 25. REPEATED
 26. REPEATED
 27. REPEATED
 28. REPEATED
 29. REPEATED
 30. REPEATED
 31. REPEATED
 32. REPEATED
 33. REPEATED
 34. REPEATED
 35. REPEATED
 36. REPEATED
 37. REPEATED
 38. REPEATED
 39. REPEATED
 40. REPEATED
 41. REPEATED
 42. REPEATED
 43. REPEATED
 44. REPEATED
 45. REPEATED
 46. REPEATED
 47. REPEATED
 48. REPEATED
 49. REPEATED
 50. REPEATED
 51. REPEATED
 52. REPEATED
 53. REPEATED
 54. REPEATED
 55. REPEATED
 56. REPEATED
 57. REPEATED
 58. REPEATED
 59. REPEATED
 60. REPEATED
 61. REPEATED
 62. REPEATED
 63. REPEATED
 64. REPEATED
 65. REPEATED
 66. REPEATED
 67. REPEATED
 68. REPEATED
 69. REPEATED
 70. REPEATED
 71. REPEATED
 72. REPEATED
 73. REPEATED
 74. REPEATED
 75. REPEATED
 76. REPEATED
 77. REPEATED
 78. REPEATED
 79. REPEATED
 80. REPEATED
 81. REPEATED
 82. REPEATED
 83. REPEATED
 84. REPEATED
 85. REPEATED
 86. REPEATED
 87. REPEATED
 88. REPEATED
 89. REPEATED
 90. REPEATED
 91. REPEATED
 92. REPEATED
 93. REPEATED
 94. REPEATED
 95. REPEATED
 96. REPEATED
 97. REPEATED
 98. REPEATED
 99. REPEATED
 100. REPEATED





This information was gathered by input into the Hamilton County Geographic Information System. This document is considered an official record of the GIS.

Entry Date: 7-23-03

Entered by: J. Hall

PROJECT NO.	LINES	SHEET NO.	TOTAL SHEETS
		5	9